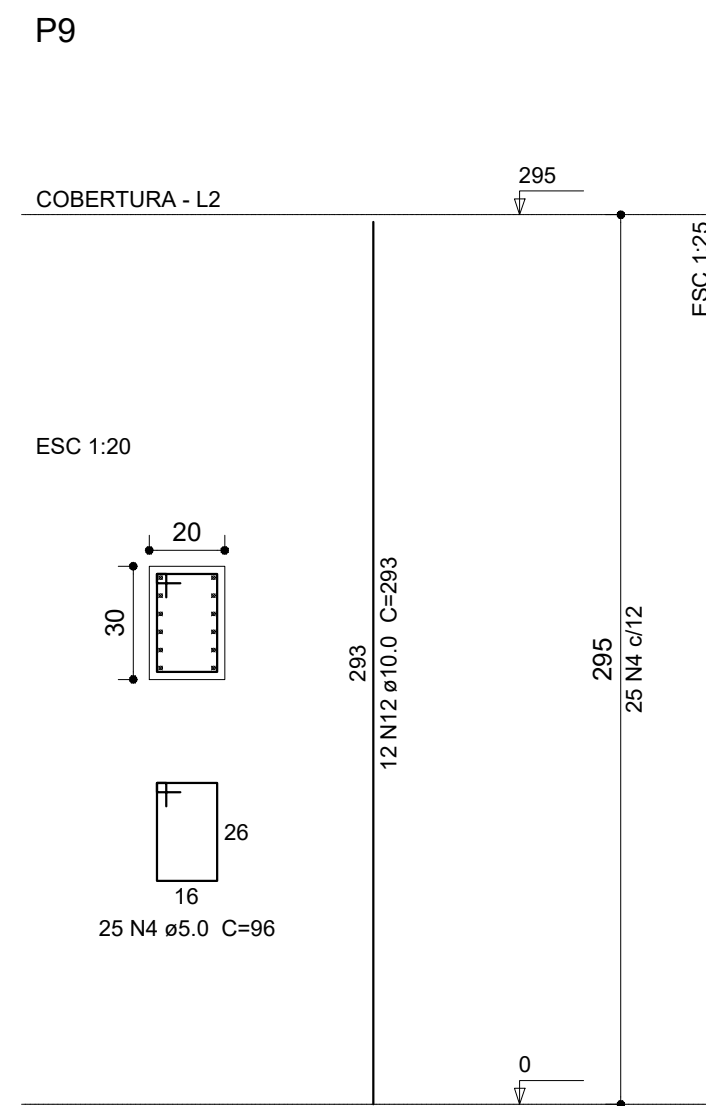
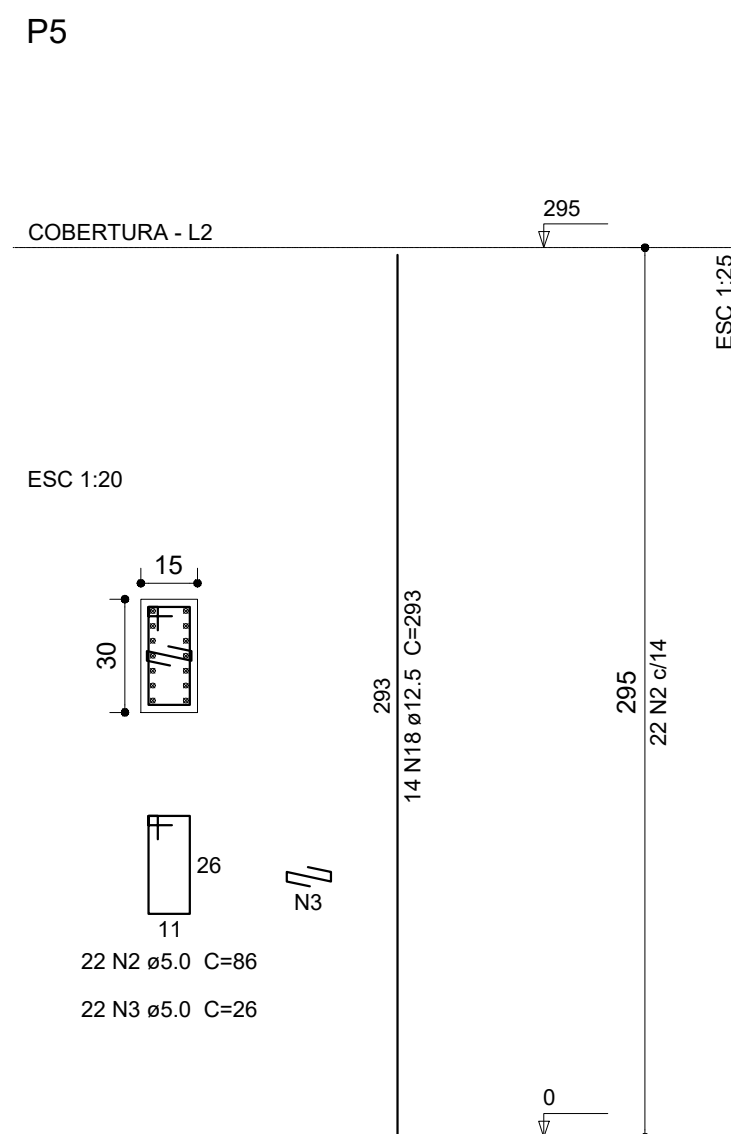
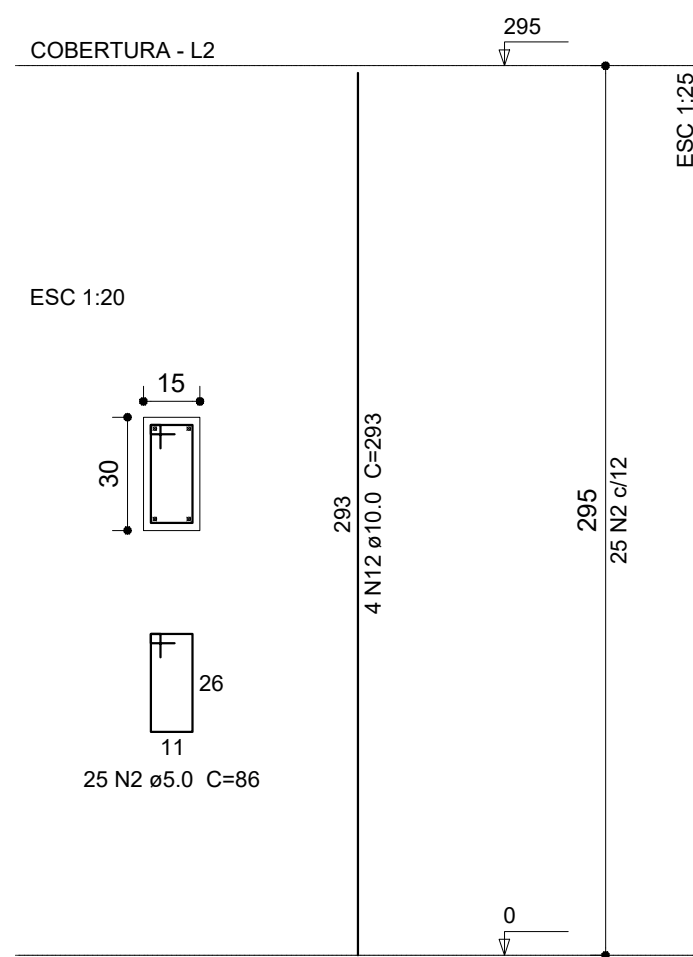


P1=P2=P3=P4=P6=P7=P8



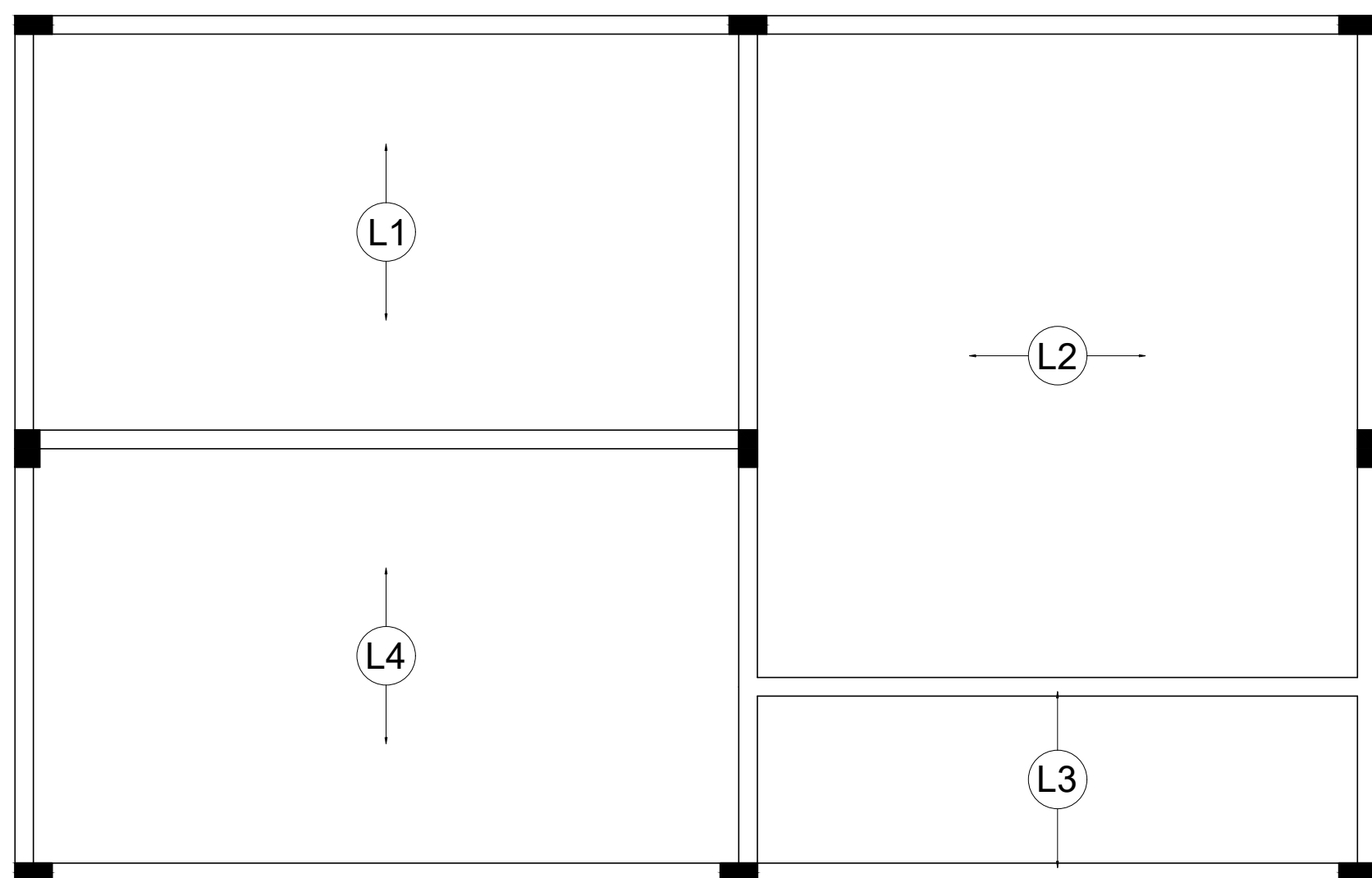
Relação do aço

AÇO	N	DIAM	Q	UNIT (cm)	C.TOTAL (cm)
CA60	1	5.0	233	106	24698
	2	5.0	197	86	16942
	3	5.0	22	26	572
	4	5.0	25	96	2400
CA50	5	8.0	4	153	612
	6	8.0	2	370	740
	7	10.0	4	1096	4384
	8	10.0	6	715	4290
	9	10.0	6	741	4446
	10	10.0	2	530	1060
	11	10.0	4	104	416
	12	10.0	40	293	11720
	13	12.5	2	1133	2266
	14	12.5	2	1134	2268
	15	12.5	1	403	403
	16	12.5	2	620	1240
	17	12.5	2	664	1328
	18	12.5	14	293	4102

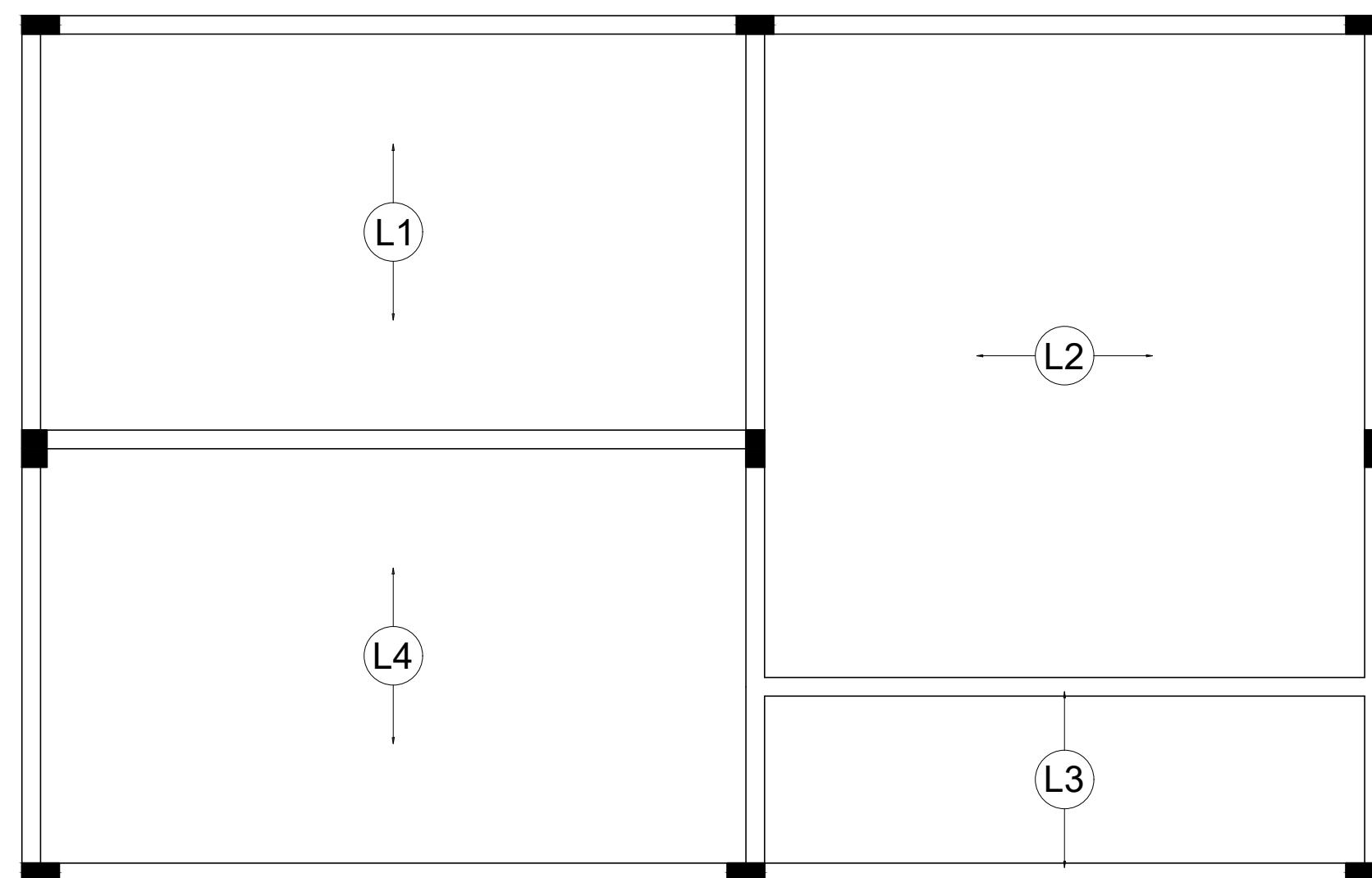
Resumo do aço

AÇO	DIAM	C.TOTAL (m)	PESO + 10 % (kg)
CA50	8.0	13.6	5.9
	10.0	263.2	178.5
	12.5	116.1	123
CA60	5.0	446.2	75.6
PESO TOTAL			
CA50		307.3	
CA60		75.6	

Vol. de concreto total (C=20) = 4.49 m³
Área de forma total = 75.63 m²



Armação positiva das lajes do pavimento Cobertura (Eixo X)
escala 1:50



Armação positiva das lajes do pavimento Cobertura (Eixo Y)
escala 1:50